

WORLDMARK

DELHI

Worldmark in Delhi which consists of Worldmark 1 and Worldmark 2 & 3 is a dynamic fusion of premium office spaces and retail development. The campus features innovative workspaces, COWRKS, world-class office suites at Atelier, and a vibrant social infrastructure delivered through 'The Food Capital', providing an exceptional work environment while supporting a holistic 9x9 lifestyle.

Strategically located in upscale Aerocity district. Its proximity to NH-48 near Indira Gandhi International Airport makes it an ideal location for the leading global organizations





KEY STATISTICS

7.6 Acres
CAMPUS AREA

1.5M sf
TOTAL LEASABLE AREA

1.4M sf
AREA LEASED

₹ 41,182M
MARKET VALUE

NEW DEVELOPMENTS

69K sf
NEW LEASES

47K sf
AREA RE-LEASED

152K sf
AREA RENEWED

₹ 65M
INVESTED FOR ASSET
UPGRADATION

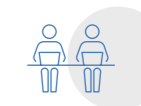
PROPERTY HIGHLIGHTS



Unique fusion of
**workspace and premium
lifestyle** destinations



Over **1000+** car parking spots
with **3*3 stack facility**



COWRKS offers a range of
**well-equipped premium,
flexible managed
workspaces**



Comprehensive **emergency
services** and **top-tier
security** with **advanced
surveillance** ensure a safe
and secure environment



Complimentary **retail
and fine dining options,
beautifully landscaped
areas,and a **dedicated crèche**
for added convenience**



Advanced **visitor
management**



Equipped with **medical
wellness center, pharmacy,
and ambulance** services



APPROACH TO SUSTAINABILITY

LEED PLATINUM
Core & Shell Rating

EV CHARGING
Facility integrated

ES FILTER
Integrated common areas

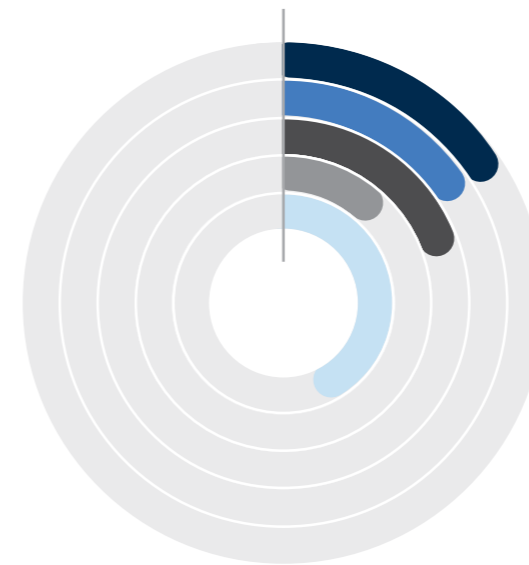
EFFICIENT CHILLED
Water HVAC System

RAINWATER HARVESTING
Tank and pits

BEE 5 STAR
Rated campus



TENANT PROFILING
Sector-wise occupancy



- 15% Financial Services
- 10% Retail
- 15% Consulting
- 19% Industrial and Logistics
- 41% Others

MARQUEE TENANTS
(As per Gross Contracted Rentals)

- Ernst and Young Services Pvt Ltd
- Mitsui & Co. India Pvt Limited
- Cowrks India Private Limited
- SAEL Industries Limited
- Greenlam Industries Limited